



Co-located with:



Introducing:



**18 – 21 FEBRUARY 2023**  
RIYADH FRONT EXHIBITION AND  
CONFERENCE CENTER (RFECC)

# The Strategic Project Management Role: Closing the execution gap in Construction

Eng. Grace Najjar  
Regional Managing Director,  
Middle East and North Africa –  
Project Management Institute

[www.thebig5saudi.com](http://www.thebig5saudi.com)





Construction, the biggest industry in the world (13% of GDP), is **not performing well**: 1% Annual growth for the past two decades.



**\$69.4 trillion in global infrastructure investment** would be needed through 2035.



**Skilled-labor shortages** have become a major issue and retirements will drain talent. E.g.: 41% of the US construction workforce is expected to retire by 2031.



## McKinsey Findings on Construction

Construction is the biggest industry in the world, and yet, even outside of crises, it is not performing well. **The ecosystem represents 13% of global GDP**, but construction has seen a meager productivity growth of 1% annually for the past two decades.

From 2014 to 2019, private-equity firms raised more than \$388 billion to fund infrastructure projects, including \$100 billion in 2019 alone, a 24% increase from 2018

McKinsey analysis found that **\$69.4 trillion in global infrastructure investment** would be needed through 2035 to support expected GDP growth and that every third global urban household cannot afford a decent place to live at market prices.

**Skilled-labor shortages** have become a major issue in several markets, and retirements will drain talent. For example, about 41% of the current US construction workforce is expected to retire by 2031

Construction-related spending accounts for 13% of global GDP

### **Typical schedule overrun of 20% for large construction projects**

Construction projects have **become increasingly complex**, with a growing share of megaprojects that are above \$1 billion – KSA market forecast shows an average annual real growth of 2.6% y-o-y between 2021 and 2025, as economic activity recovers and efforts surrounding Saudi Arabia's Vision 2030 framework gather pace.

# Our Research

## PMI Global Construction Survey:

- Conducted September 2020
- **40,000+ PMP's** in Construction industry
- Regions represented include
  - North America
  - LATAM
  - EMEA
  - India
  - China
  - APAC

72%

Percent of participants experience **project delays** Always or Often

70%

Percent of participants experience **scope creep** Always or Often

40%

On average, participants stated that 40% of projects **exceed original timelines.**

73%

Percent of **projects that end over budget.**

***For every \$1b spent, \$127m is wasted vs. \$113m non-construction.***

- Pulse 2020

# Our Research

**73%**

of **projects end over budget.**



**72%**

of construction project management professionals experience **project delays** always or often.

**70%**

of construction project management professionals experience **scope creep** always or often.

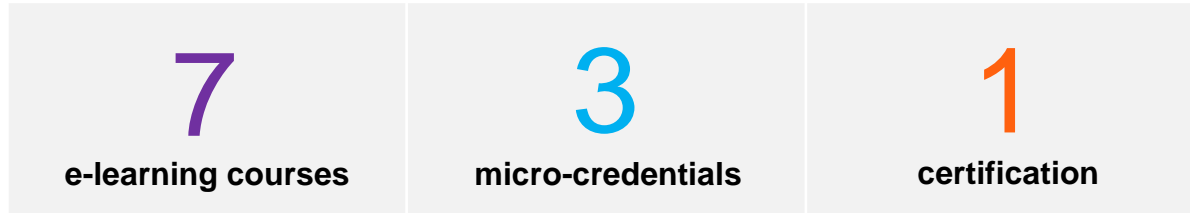
*Surveyed 40,000+ PMPs in Construction*

***For every \$1billion spent on construction projects, \$127M is wasted.***

*- PMI Pulse of the Profession research - 2020*

# PMI-CP: The Future of Work in the Construction Sector

In collaboration with industry experts around the world, PMI is applying its mission and vision to Construction Professional in Built Environment Projects (PMI-CP)<sup>™</sup>, a new programme that sets the standard for bringing large, complex construction projects to life on-time and on-budget.



# PMI-CP Course Titles

## **Built Environment Project Communication Pro**

(Course and Micro-Credential)

## **Scope and Change Order Management in the Built Environment**

(Course Only)

## **Interface Management in the Built Environment**

(Course Only)

## **Built Environment Technology and Innovation Pro**

(Course and Micro-Credential)

## **Built Environment Performance and Materials Management Pro**

(Course and Micro-Credential)

## **Contract and Risk Management in the Built Environment**

(Course Only)

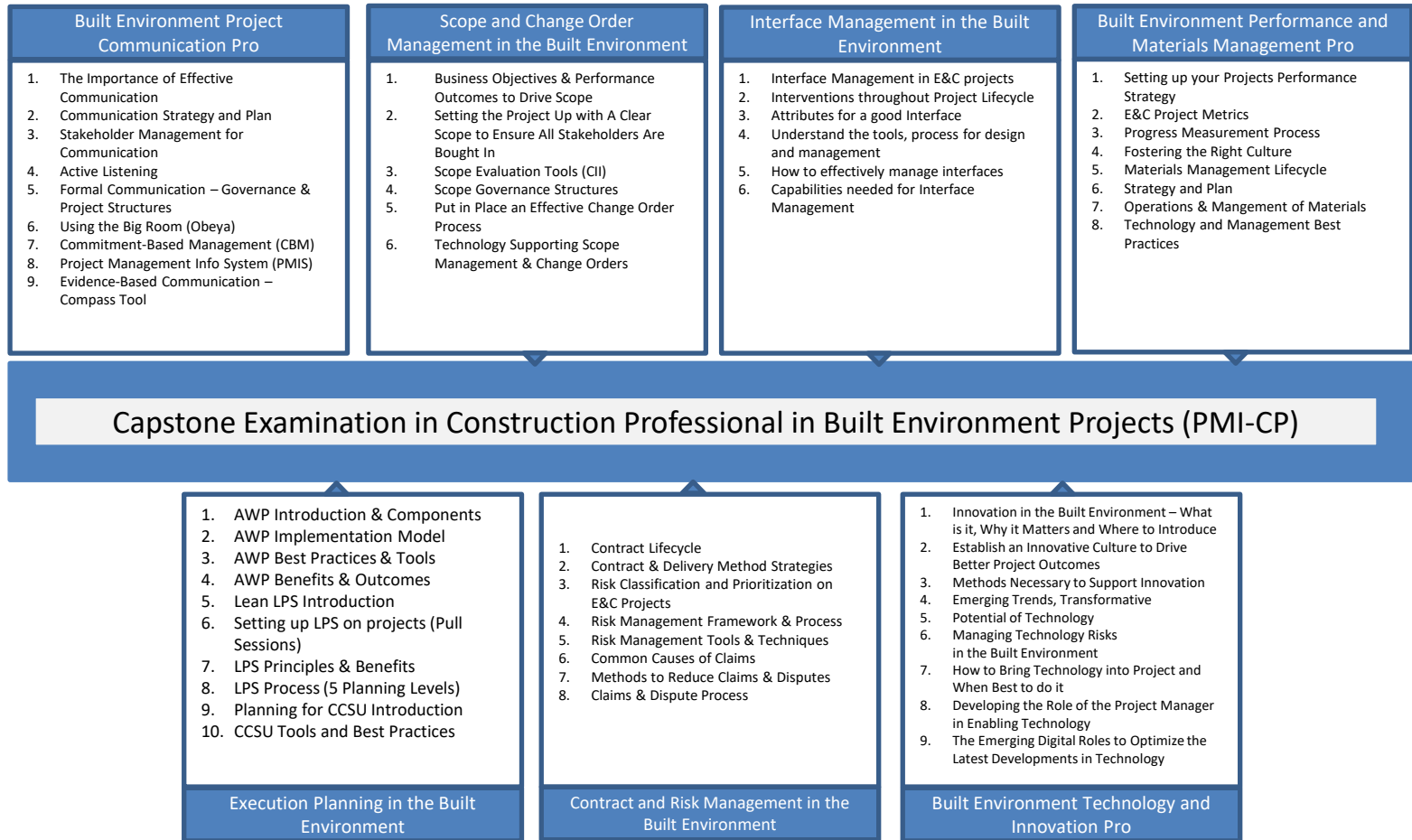
## **Execution Planning in the Built Environment**

(Course Only)

*Courses can be taken in any order. Successful completion of all 7 courses and earning the 3 micro-credentials is required in order to apply for the PMI-CP certification exam. You also need 3 + years experience in the industry.*



<http://www.pmi.org/certifications/construction>







# How can this benefit me and my organization?

- A certification from a world-class institution that sets **the new standard** for global construction project management.
- An Independent affirmation of an individual's Project Management Skills delivering Construction Projects.
- A certification that helps organizations improve the **efficiency, profitability, and sustainability** of their projects.
- A clear commitment to employees by upskilling them with **cutting-edge course content** developed by industry experts.

The pressure is on for organizations to get serious about sustainability and social impact strategies.





# PMI's Most Influential Projects of 2022



## Qiddiya Water Theme Park

Entertainment



## Diriyah Gate

Urban Development | Middle East & North Africa

[thebig5saudi.com](https://thebig5saudi.com)

# The ESG Imperative

Turning Words Into  
Action



# Set Standards with a Sense of Urgency



Identify the ESG factors most critical to a company or a project

Project leaders to reinforce the organization's strategic vision

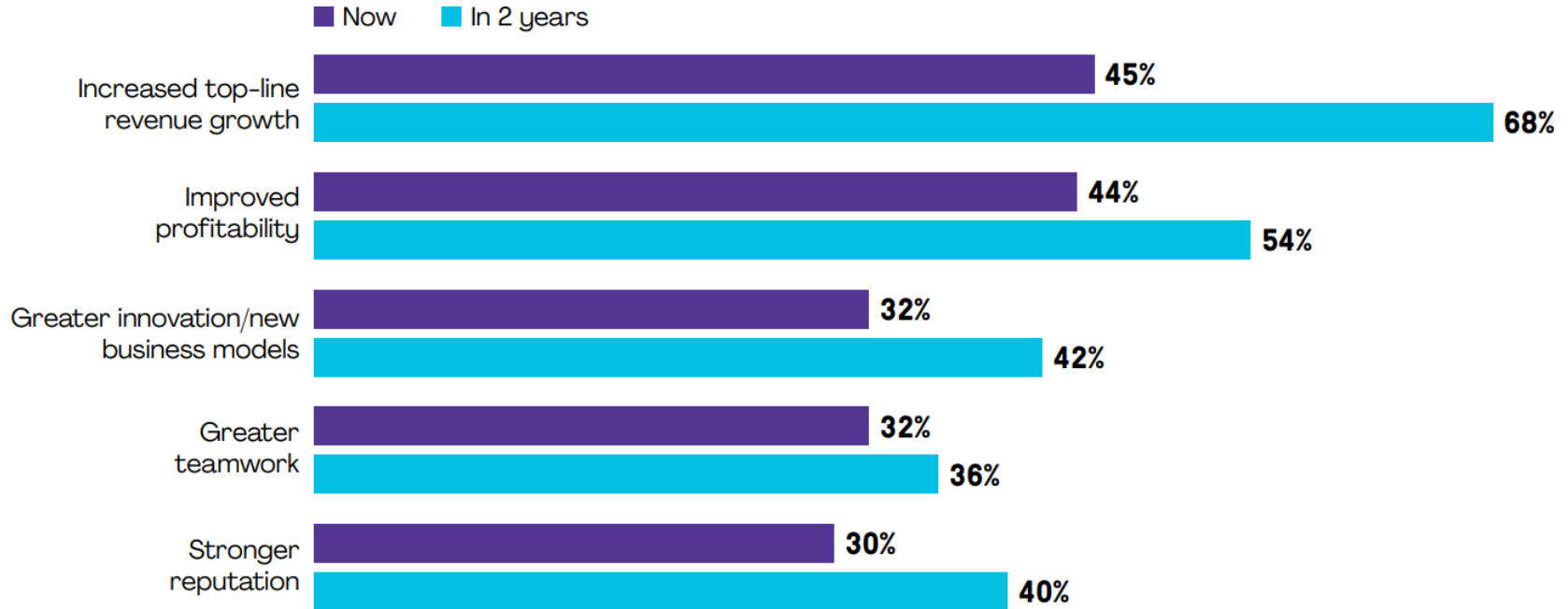
Embrace a wider stakeholder-centric perspective

Gathering and sharing information, to create a feedback loop that mitigates disruptions.

# The Power of ESG

Going in with a strategy for sustainability can be a huge boost to business performance—now and in the future.

## Determine ROI for long term



Source: *Innovating for a Sustainable Future*, NTT, 2022

# Develop and Empower Project Professionals, Value Delivery and transformation leaders



Bridging the talent gap with project leaders  
with ESG Knowledge and experience

Data / Risk analysis knowledge

Creative problem-solving skills

Critical thinking with empathy

Ensure project activities align with  
organization's ESG strategy



# PMI + Green Project Management

About Us » Press & Media » Press Releases

## Strategic Partnership Between Project Management Institute (PMI) and Green Project Management (GPM) to Advance Sustainability in Project Management

PHILADELPHIA, PA / DETROIT, MI - 21 FEBRUARY 2022

New partnership will focus on enabling project professionals and changemakers to integrate sustainability into every aspect of project planning and value delivery

Project Management Institute (PMI), the world's leading association for project professionals, and Green Project Management (GPM) [G](#), an internationally certified social enterprise whose mission is to decouple socio-environmental degradation from economic growth on a global scale, today announced a strategic partnership to equip project managers with the tools and expertise needed to deliver greater value on global sustainability strategies, goals, and visions.

The partnership will provide PMI's global community of more than 2.1 million certification holders, members, volunteers, and other stakeholders an introduction to GPM's industry-leading models and deep expertise in advancing sustainability through innovative practices in project management. The collaboration will foster joint research opportunities and projects in support of the advancement of sustainable and regenerative development in the realm of project management.

The cooperative agreement reflects PMI and GPM's shared commitment to the United Nations' Sustainable Development Goals (SDGs) [G](#), including the 17th SDG focused on strengthening global partnerships to drive sustainable development, as well as other SDGs focused on ensuring affordable and clean energy, establishing sustainable communities, and tackling climate change.

"We are pleased to establish a working relationship with PMI with the shared objective of strengthening the project profession. To deliver on the Sustainable Development Goals (SDGs), and mitigate the impacts of climate change, we must do everything we can to ensure that projects and project management are positioned to make the biggest impact and partnerships are critical to making forward progress. We look forward to making an impact together," stated GPM founder Joel Carboni [G](#).

**For Media Contact Only:**


Amanda DeFuria  
[Amanda.DeFuria@pmi.org](mailto:Amanda.DeFuria@pmi.org)

[Share](#) [Share](#) [Tweet](#) [Share](#)

**PMI** Project Management Institute  
845,340 followers  
13h · [G](#)

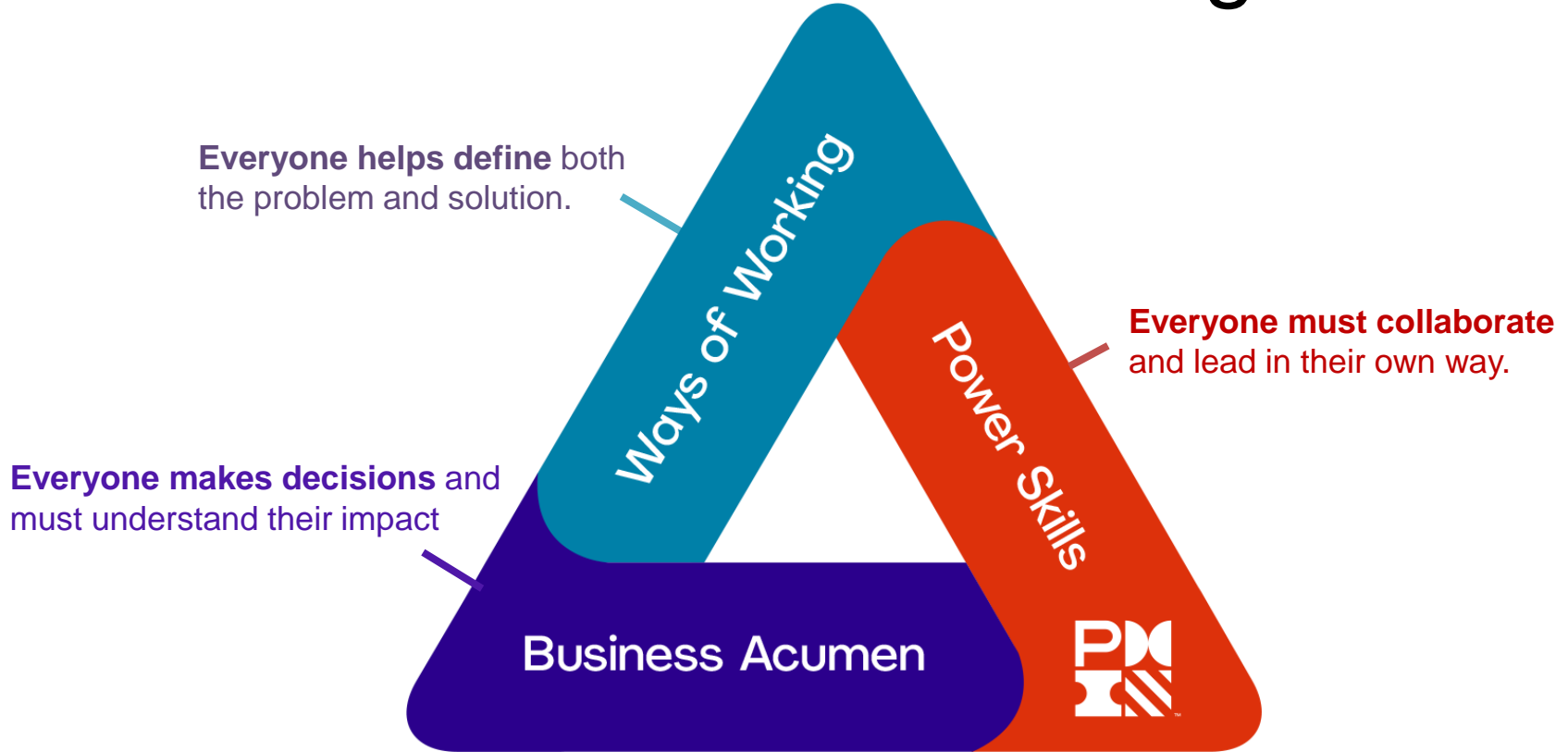
In a world of constant change, working smarter and creating positive impact are more important than ever. That's why we're partnering with [GPM Global \(Green Project Management®\)](#) to enable project professionals to integrate sustainability into every aspect of project planning and value delivery. Together, we'll provide our global community with an introduction to GPM's industry-leading models and deep expertise in advancing sustainability through innovative practices in project management. The collaboration will also foster joint research opportunities and projects in support of the advancement of sustainable and regenerative development in the realm of project management. Learn about the partnership here: <http://ow.ly/7Omg50187if>

[#ProjectManagement](#) [#Sustainability](#) [#Innovation](#)





# The PMI Talent Triangle





## Business Acumen

- Benefits Management and Realization
- Business Models and Structures
- Competitive Analysis
- Customer Relationships and Satisfaction
- Industry Domain Knowledge
- Legal and Regulatory Compliance
- Market Awareness
- Function-Specific Knowledge
- Strategic Planning, Analysis, Alignment



## Ways of Working

- Agile and Hyper Agile
- Hybrid
- Design Thinking
- Transformation
- Data Gathering and Modeling
- Earned Value Management
- Governance
- Performance Management
- Requirements Management and Traceability
- Risk Management
- Schedule Management
- Scope Management
- Time, Budget and Cost Estimation



## Power Skills

- Leadership
- Active Listening
- Communication
- Adaptability
- Brainstorming
- Coaching and Mentoring
- Conflict Management
- Emotional Intelligence
- Influencing
- Interpersonal Skills
- Negotiation
- Problem Solving
- Teamwork

# PMI Driving Social Impact and Partnering with UN on SDGs

## PMImpact



**PMImpact is a call to action for all changemakers to make their mark on the world by inspiring, demonstrating and enabling social good impact.**

Changemakers, are individuals around the globe who wake up daily to figure out how to drive sustained change in their organizations and communities. They have enormous potential to do good by using their project management skills and are uniquely positioned to help address problems, resolve issues and meet needs around the globe. Changemakers make an impact by dedicating their skills, expertise and time to help their communities and advance social causes. By applying and inspiring leadership, vision, motivation and problem-solving skills, these individuals help others reach their goals.



**PMI and Support for the UN 17 Sustainable Development Goals**

**We're calling on our global community again to help us reach our pledge goal of 125,000 hours of service to advance the 17 Sustainable Development Goals in 2021.**



### Community

PMIEF creates sharing networks so that youth-serving nonprofits can learn from each other.



### Research

PMIEF monitors, learns, and adjusts its products and services to assure the maximum impact on youths' success.



### Scholarships

Scholarships are made available to youth and nonprofit staff who want to further explore project management.



### Resources

PMIEF designs engaging activities and globally-appropriate resources for youth to learn project management, and helps nonprofits build them into their programs.



### Volunteers

PMIEF leverages PM volunteers to help nonprofits customize PMIEF materials for their programs, and mentor youth in learning and applying PM.

# Take-Aways for your Projects

**Set Sustainable  
Standards and  
Outcomes**

**Measure Long-  
Term ROI and  
Benefits**

**Train your Project  
Teams to Assure  
Success**


# THANK YOU


Email us at: [pmimena@pmi.org](mailto:pmimena@pmi.org)

## Follow us on:

Project Management Institute MENA 

 [@PMIMENA](https://twitter.com/PMIMENA)

PMI Middle East and North Africa Region 

 [PMI MENA Region \(Middle East and North Africa\)](https://www.youtube.com/watch?v=PMIMENA)

<https://www.instagram.com/pmimena/> 

<https://www.pmi.org/certifications>

<https://www.pmi.org/membership>



Project Management Institute  
Academy of Saudi Arabia

## PMI KSA CHAPTER

<https://www.linkedin.com/company/pmi-ksa-chapter/?originalSubdomain=sa> 



INDUSTRY

Talks



Talks

Architecture  
& Design



Talks

Concrete



Talks

Facilities  
Management



Talks

HVAC R



Talks

Project  
Management



Talks

Technology



Talks

Facades  
& Glass